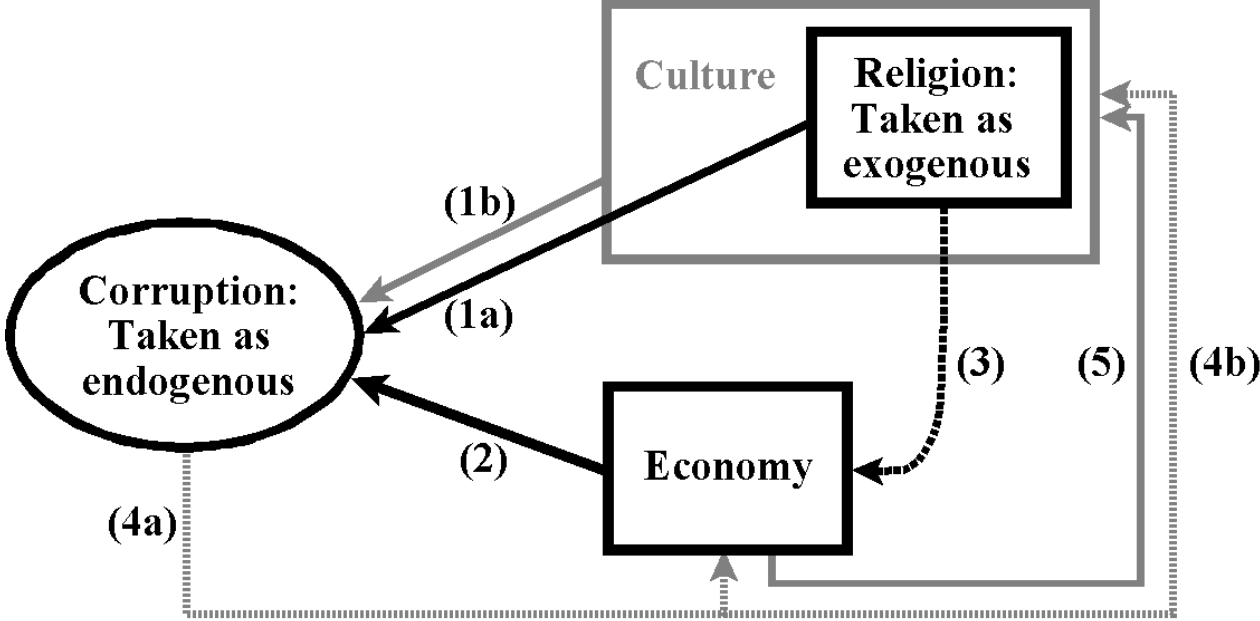


Figures to:

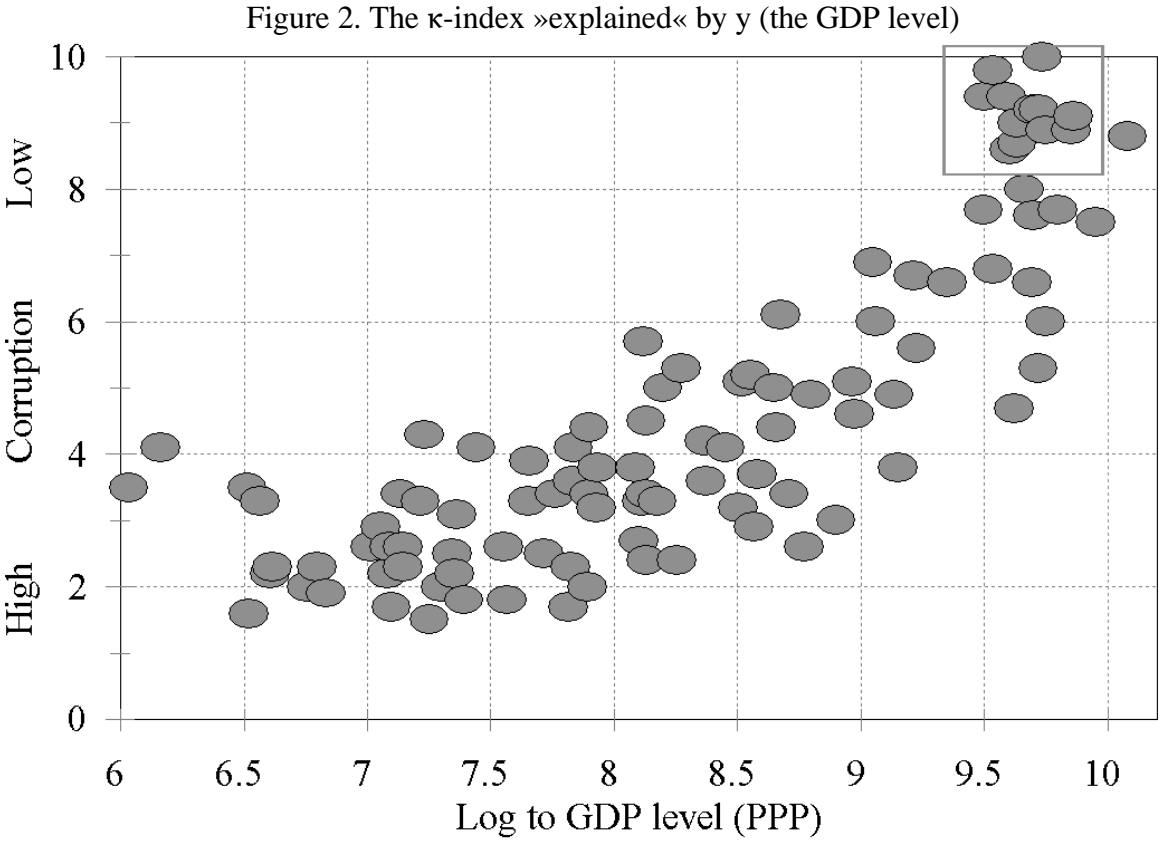
Martin Paldam: Corruption and religion

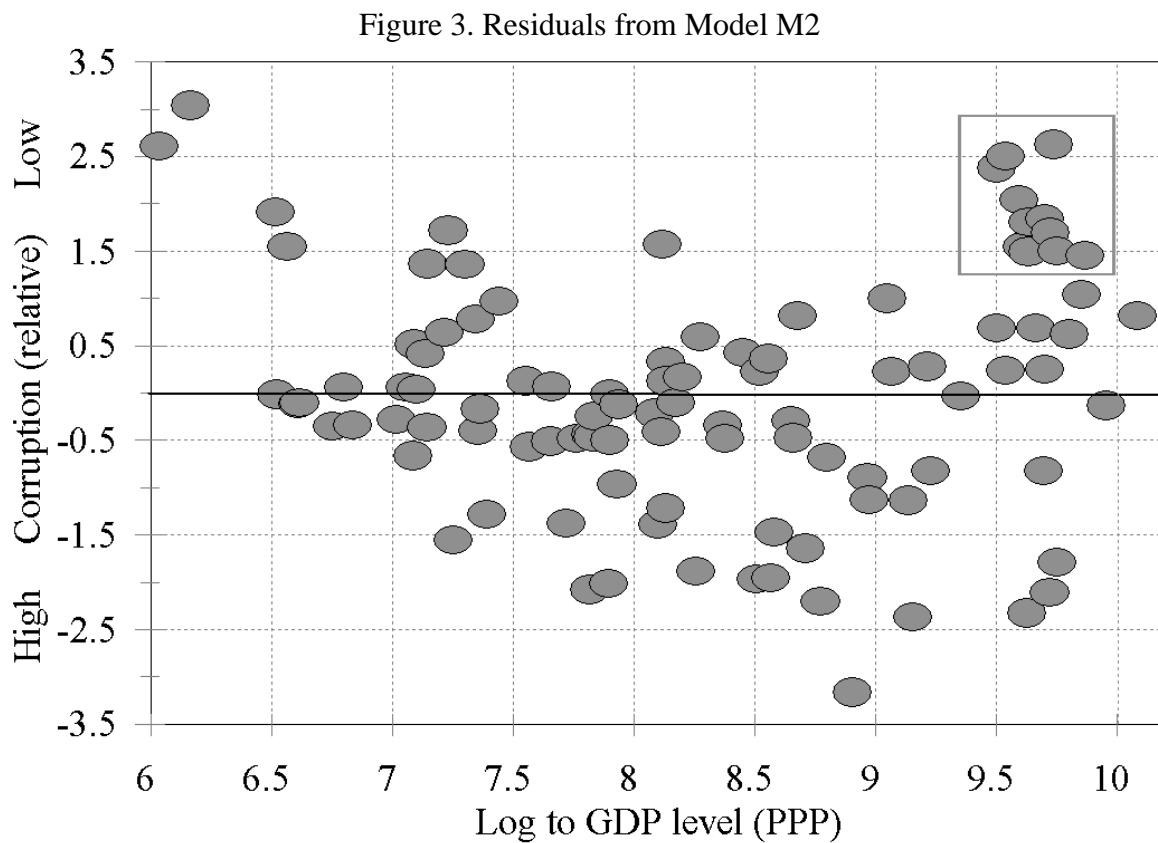
(file 1)

Figure 1. The framework of the analysis



Note: Black indicates concepts for which variables are defined and causal links analyzed. The broken black arrow is a causal link that is discussed, but not estimated. Grey indicates excluded variables and causal links.





Note: The residuals are scaled by a factor of about 1.5 compared with Figure 2.

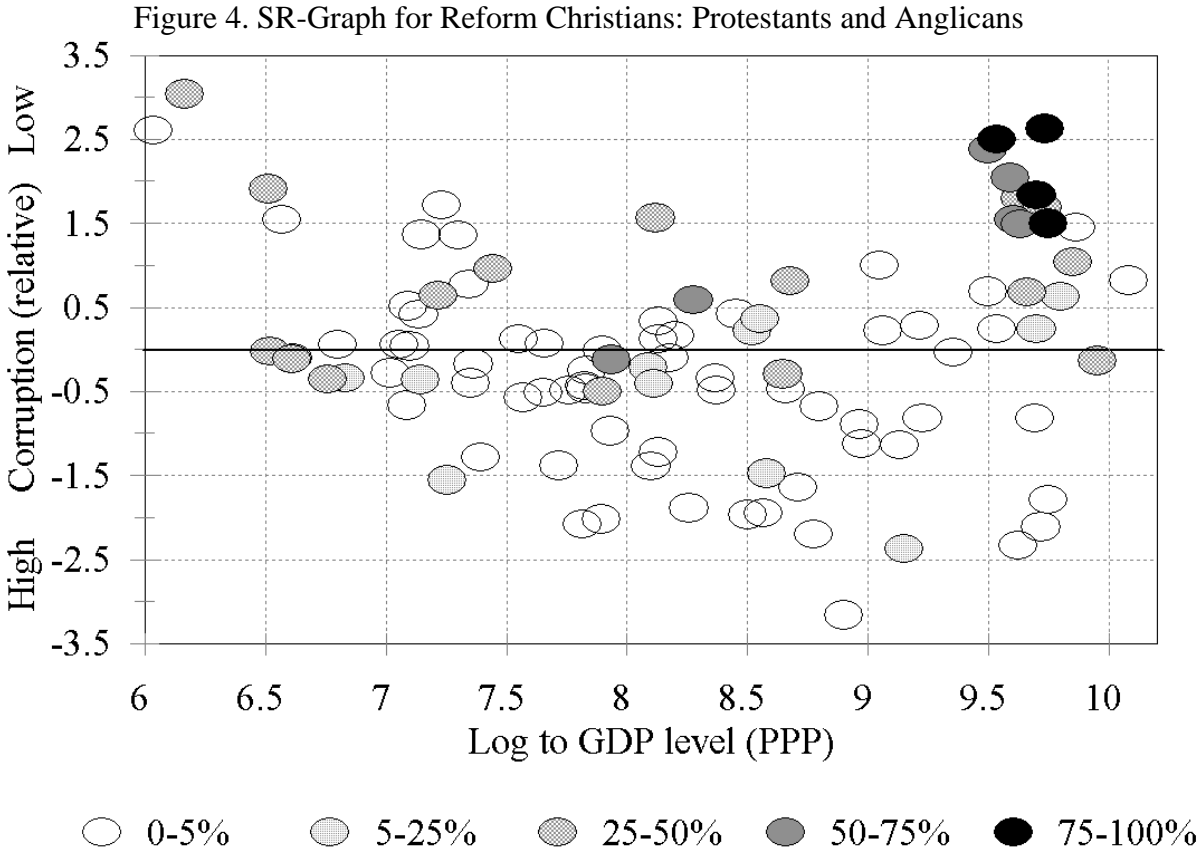


Figure 5. SR-Graph for Pre-Reform Christians: Old Christians and Catholics

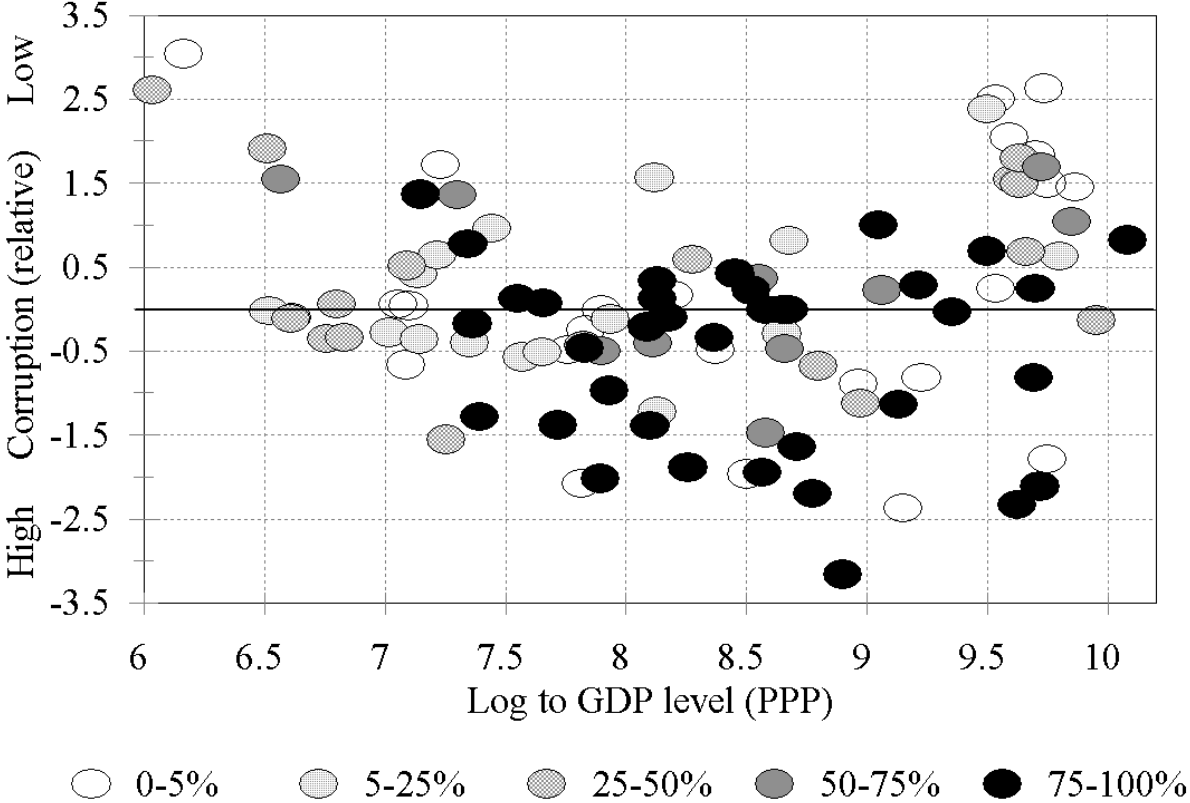
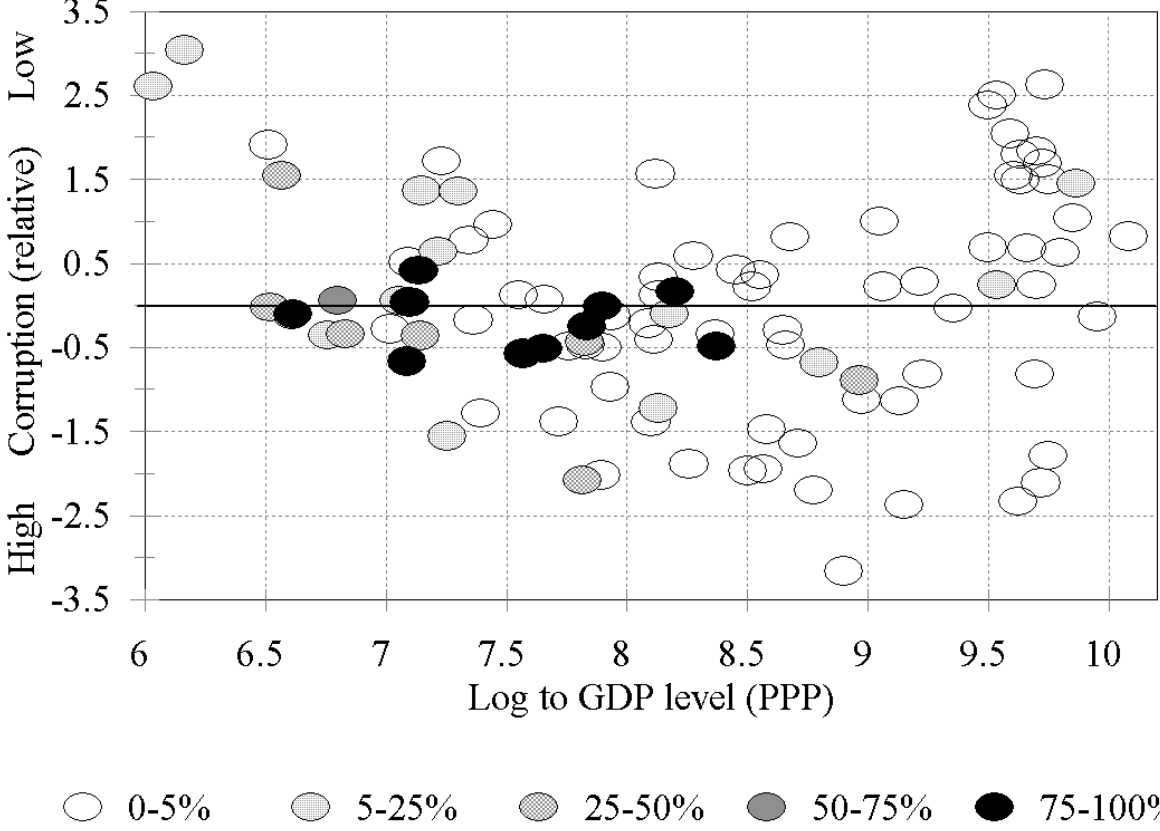


Figure 6. SR-Graph for Islam



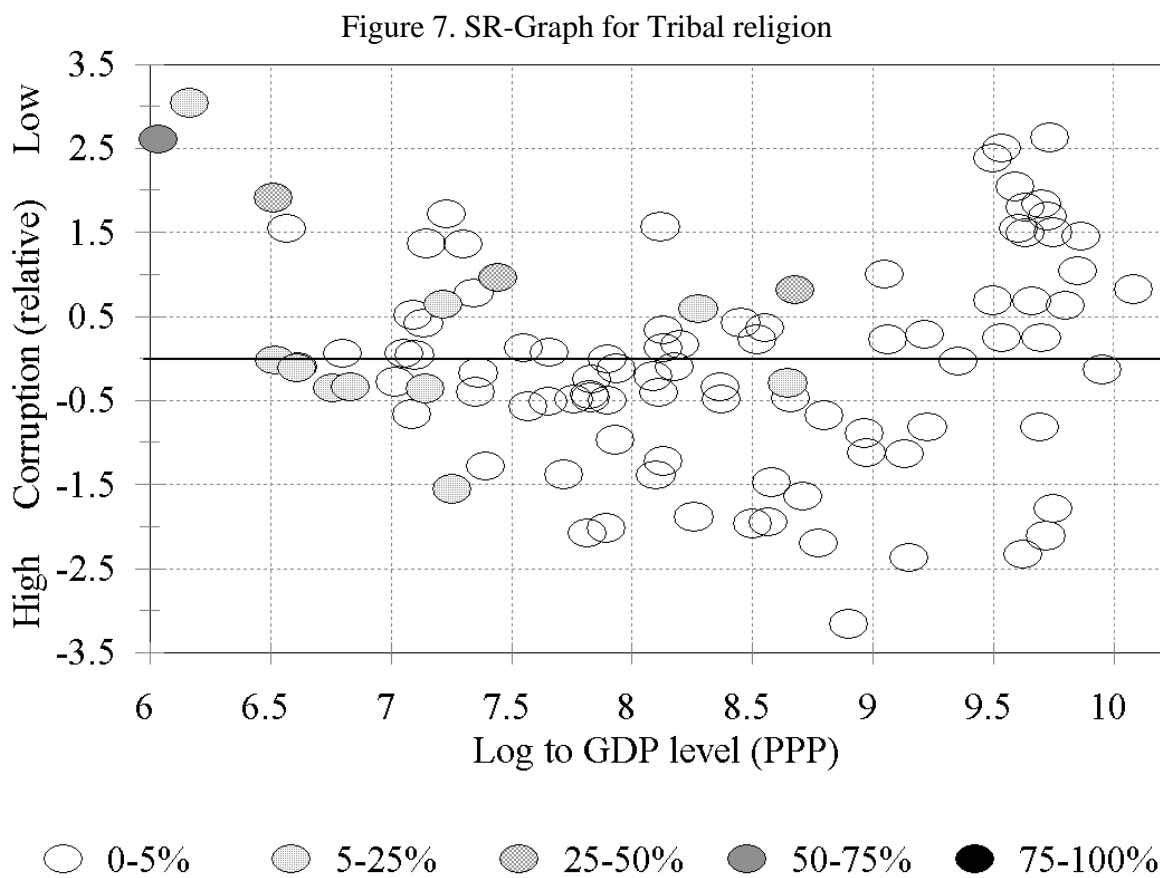


Figure 8. Tribal religion as a indication of an U-shaped corruption curve

